

Similar Image



Throttling J-Lock valve, Analog/TTL controller

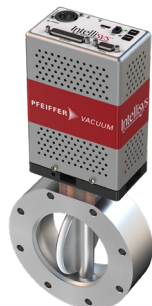
HV throttling butterfly valve, DN 63 ISO, QPAG controller, partially sealing, 24 VDC, SS

Part number: TBJQPANG-L063

Nor-Cal Products



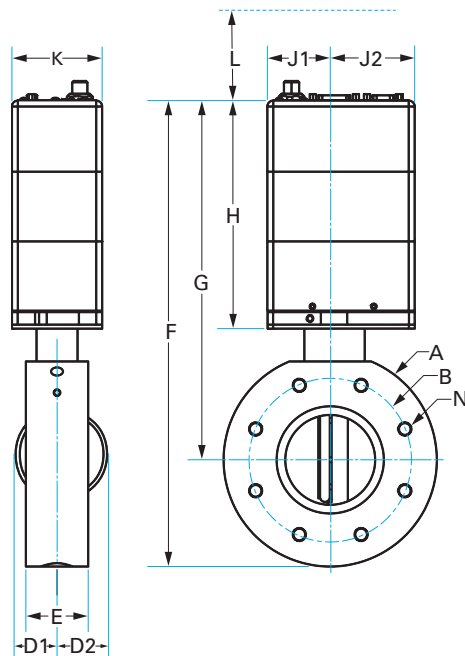
by PFEIFFER VACUUM



Similar Image

Throttling J-Lock valve, Analog/TTL controller HV throttling butterfly valve, DN 63 ISO, QPAG controller, partially sealing, 24 VDC, SS

- Adaptive algorithm for improved stability and faster transitions
- Space saving, low cost design
- High reliability, low particle generation
- Can be operated in any orientation
- Body can be heated up to 200°C with optional heaters
- CE marked/fully REACH and RoHS compliant



Dimensions (in inches)

Dim A	5.12"
Dim B	4.33"
Dim C	0.354"
Dim D-1	0.945"
Dim D-2	1.38"
Dim E	1.57"
Dim F	12.9"
Dim G	10.3"
Dim H	6.97"
Dim J-1	1.93"
Dim J-2	2.56"
Dim K	2.76"
Bolt Hole Dia.	0.359"
# Bolt Holes	4

TBJQPANG-L063

Parameters	Specifications
Valve / Flange Size	DN 63 ISO-F
Communications Interface	Analog
Additional Controller Features	Gauge Supply
Flange Size / Type	DN 63 ISO-F
Controller Communications	Analog/TTL system interface; RS232 service port
Supply Voltage	24 V DC ($\pm 5\%$)
Power Connector	XLR, 5-pin, Female
Gauge Power Supply	± 15 V DC ($\pm 5\%$), 1.4 A max.
Pressure Range	$1 \cdot 10^{-8}$ mbar to 1.1 bar
Max Differential at Opening	1100 mbar
Max Temp (body)	150 °C

Throttling J-Lock valve, Analog/TTL controller
HV throttling butterfly valve, DN 63 ISO, QPAG controller, partially sealing, 24
VDC, SS
TBJQPANG-L063

Parameters <i>(Continued)</i>	Specifications <i>(Continued)</i>
Temp. Limits (actuator)	5 °C (minimum), 45 °C (maximum)
Open / Close Time	625 ms/625 ms
Open Conductance	380 l/s
Min. Control Conductance	0.5 l/s
Material (valve body)	316L Stainless Steel
Material (valve mechanism)	316L Stainless Steel
Plate Seal	PTFE
Shaft Seal	FKM
Leak Rate (body)	$1 \cdot 10^{-9}$ mbar l/s
Service Life	5 million cycles
Weight	10.34 lbs

VACUUM SOLUTIONS FOR INDUSTRY & RESEARCH

Nor-Cal Products is a premier global source for custom and standard high and ultra-high vacuum chambers and components critical to the success of industrial, semiconductor, coating, analytics, and research applications. We offer an extensive selection of vacuum line fittings, hardware, valves and components which complement our custom manufacturing capabilities.

EARNING YOUR TRUST

Innovative engineering, precision manufacturing, exceptional service and expert technical support are cornerstones of our corporate culture and continuous improvement goals. Your trust is our most important asset.

INNOVATION SINCE 1962

An added value to working with Nor-Cal Products is how we apply our vacuum science and industry expertise to your production and research goals and timelines. We continue to develop new component lines and services to serve the demands of the exciting and ever emerging applications that require vacuum components.

Nor-Cal Products

Headquarters: USA

1-800-824-4166 or 530-842-4457

nccsales@n-c.com

www.n-c.com



RoHS2/REACH compliant
Conflict mineral regulations enforced

All data subject to change without prior notice.

Nor-Cal Products



by PFEIFFER VACUUM